

GMW Rack Cabinet, Half Height



OVERVIEW

GMW 19" Rack Cabinet, 20U, with casters, slides, 830 mm depth, 1140 mm height.

Revised September, 2020

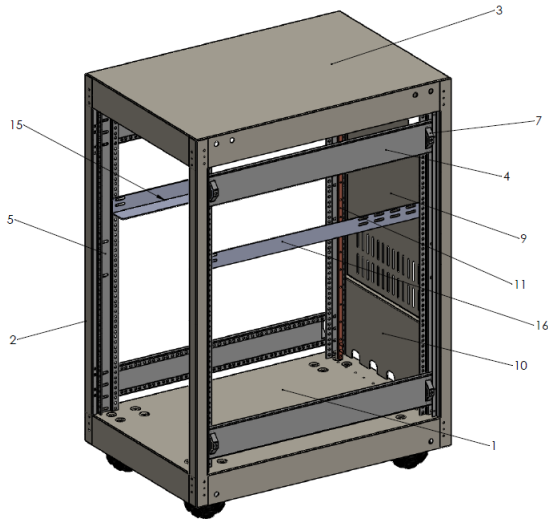
GMW Associates

🌐 www.gmw.com

✉ sales@gmw.com

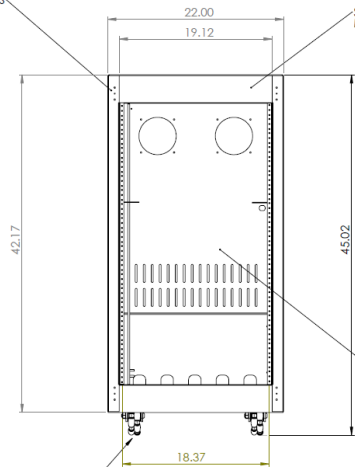
☎ +1-650-802-8292

📍 955 Industrial Road
San Carlos, California, USA



ITEM NO.	PART NUMBER	QTY.
1	91B6423 REV. B - BOTTOM	1
2	91B6423 REV. B - VERTICAL POST	4
3	91B6423 REV. B - TOP	1
4	91B6423 REV. B - RAIL SUPPORTS	4
5	91B6423 REV. B - MTG. RAIL	4
7	91B6423 REV. A - DOOR MTG. BRKT.	8
8	91B6423 REV. B - SIDE PANEL (NOT SHOWN)	2
9	91B6423 REV. B - REAR DOOR	1
10	Part1 (REAR FILLER PANEL)	1
11	Copper Grounding Bar	1
15	Left Rail Bracket-	4
16	Right Rail Bracket	4

ADD EXTRA FUSE WELDS FOR ADDED STRENGTH
8 LOCATIONS

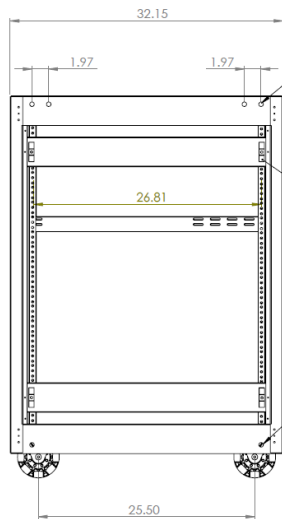
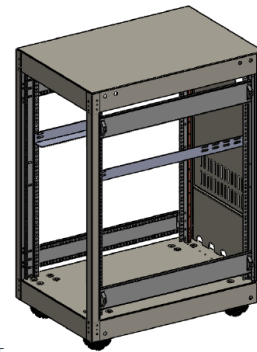


SILKSCREEN GMW LOGO, RIGHT AND MIDDLE JUSTIFY TO RACK TOP

THE FOLLOWING PIECE PARTS TO BE INSTALLED AT RELIANTEM:
 * REAR DOOR
 * REAR FILLER PANEL
 * COPPER GROUND BAR
 * SIDE PANEL DOORS
 * RAIL BRACKETS

WHEELS TO BE ADDED BY RELIANTEM

DOORS REMOVED FOR DWG PURPOSES

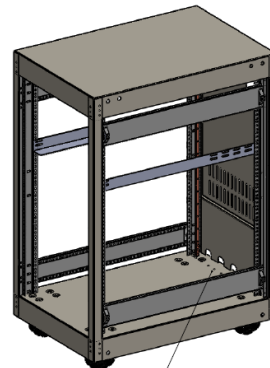


INSTALL M10 RIVET NUTS
8 LOCATIONS ON TOP

WELD DOOR MOUNTING BRACKETS TO SUPPORT BRACKETS
8 LOCATIONS

INSTALL M10 RIVET NUTS
4 LOCATIONS ON BOTTOM

DOORS REMOVED FOR DWG PURPOSES



INSTALL M5 PEM NUTS ON BASE. REFER TO BASE DRAWING