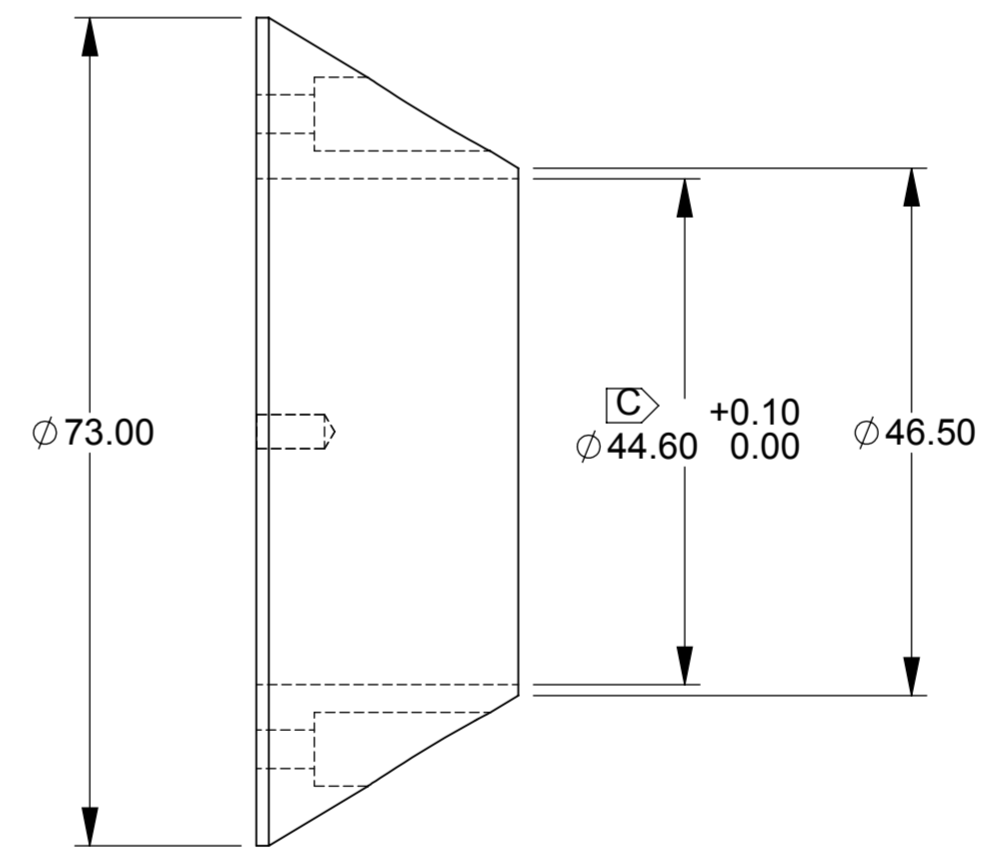
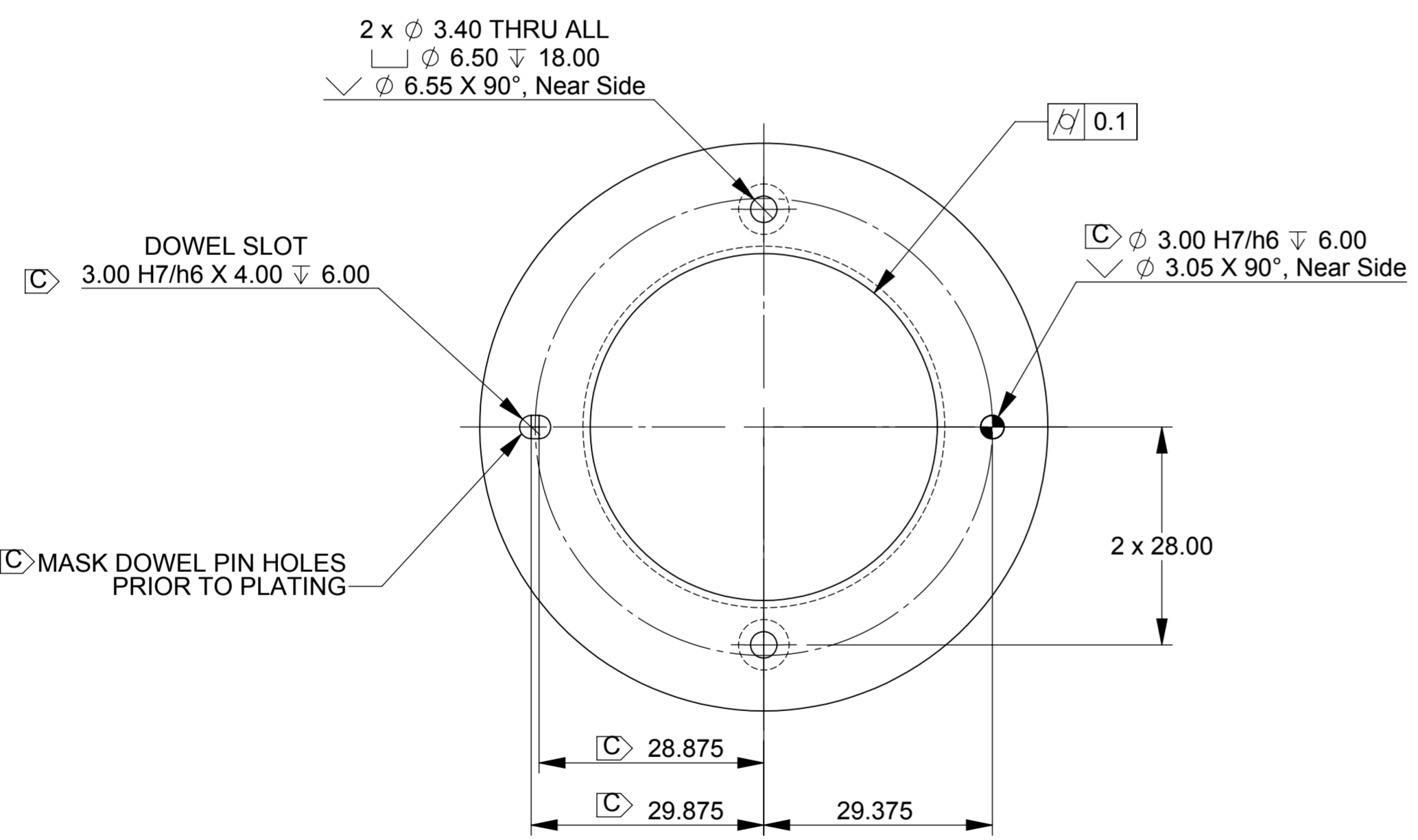
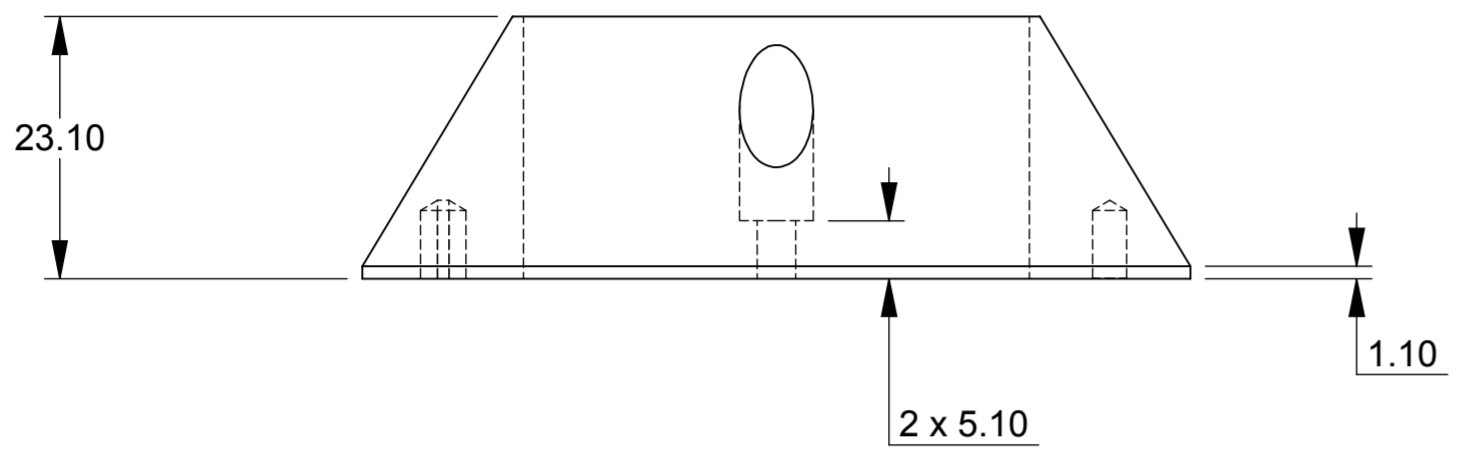


PROPRIETARY
 THIS DRAWING CONTAINS CONFIDENTIAL INFORMATION PROPRIETARY TO GMW INC. IT MUST NOT BE REPRODUCED OR DISCLOSED TO OTHERS OR USED IN ANY WAY, IN WHOLE OR IN PART EXCEPT AS AUTHORIZED IN WRITING BY GMW INC.

REVISION HISTORY			
REV.	DESCRIPTION	DATE	APPROVED
A	Release	7 Jul, 2016	T. King
B	Change Plating Specification	1 Feb, 2017	T. King
C	Include dowel tolerances. Extend one dowel hole to dowel slot. Note on masking dowel holes. Enlarge ID.	20 Aug, 2017	M. Duffy



MATERIAL: AISI 1006 MS STEEL,
 QUANTITY: 2 PER MAGNET

- NOTES:
- BREAK ALL SHARP EDGES 0.1
 - BRIGHT EN PLATE 0.025mm THICK, MINIMUM 10% PHOSPHOR CONTENT TO ASTM-B733-04 (2009) SERVICE CONDITION SC3

DRAWN M. Duffy	DATE 6 Jul, 2016
CHECKED T. King	DATE 7 Jul, 2016
ENGINEERING	DATE

DO NOT SCALE FROM DRAWING DIMENSIONS & TOLERANCES UNLESS OTHERWISE NOTED		
LINEAR	INCHES	mm
X.XXX	\pm 0.005	\pm 0.03
X.XX	\pm 0.01	\pm 0.1
X.X	\pm 0.03	\pm 0.3
X	\pm 0.06	\pm 1
DEG.	\pm 0.5	\pm 0.5
FINISH	63	1.6

GMW Associates
 955 Industrial Road, San Carlos, CA 94070
 Tel: (650) 802-8292. Fax: (650) 802-8298

TITLE:
3480
Tapered Sleeve

SIZE A2	DWG NO. 17907-0728-0	REV. C
SCALE: 1.5:1	MASS: 0.24 kg	SHEET: 1 OF 1

