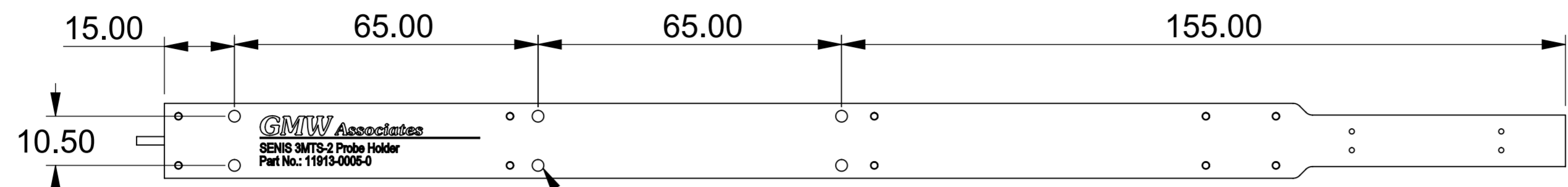


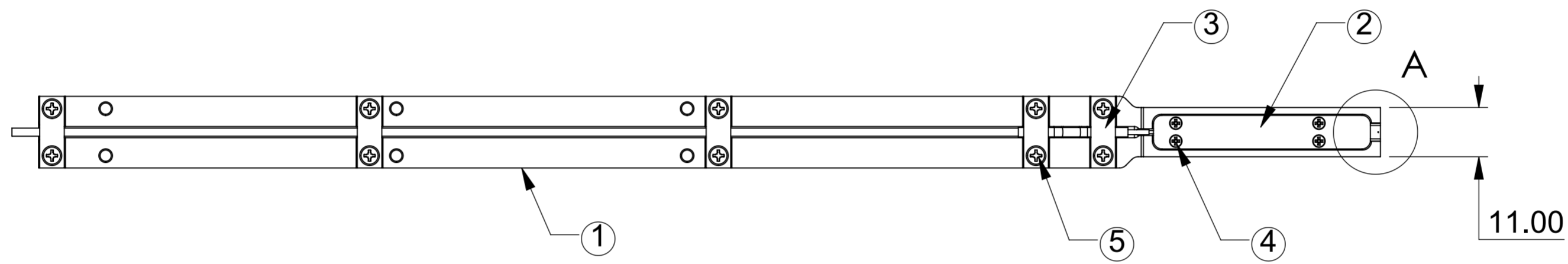
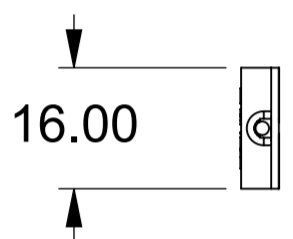
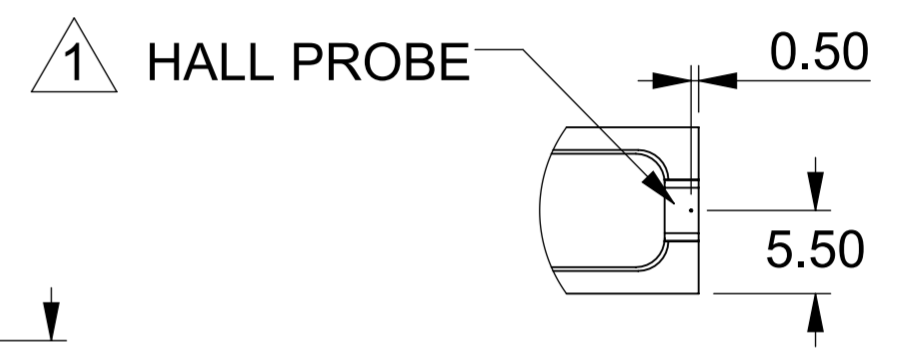
PROPRIETARY
 THIS DRAWING CONTAINS CONFIDENTIAL INFORMATION PROPRIETARY TO GMW INC. IT MUST NOT BE REPRODUCED OR DISCLOSED TO OTHERS OR USED IN ANY WAY, IN WHOLE OR IN PART EXCEPT AS AUTHORIZED IN WRITING BY GMW INC.

REVISION HISTORY			
REV.	DESCRIPTION	DATE	APPROVED
A	Release		J. tognetti

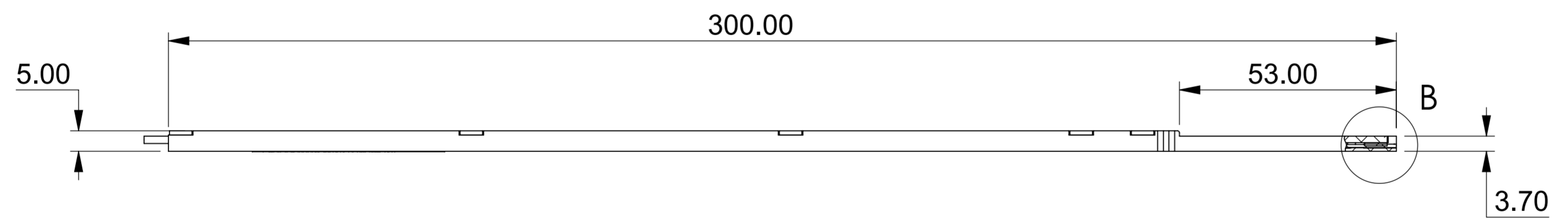
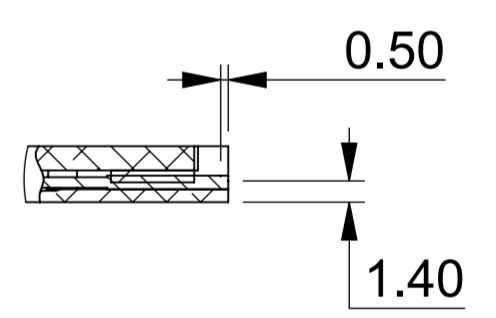


M3 PROBE HOLDER MOUNTING HOLES
 6 PLACES - PARTS LIST ITEM 6

DETAIL A
 SCALE 2 : 1



DETAIL B
 SCALE 2 : 1



NOTE:

- 1 INSTALL SENIS 3MTS-2 HALL PROBE END FLUSH WITH END OF PROBE HOLDER
- 2 HALL PROBE IS A SEPARATE ORDER ITEM
- 3 DETAILS A & B INDICATE THE CENTER OF THE FIELD SENSITIVE VOLUME

ITEM	QTY	PART NUMBER	DESCRIPTION
6	6		CHEESE HEAD SCREW, M3 x 12, PEEK / Nylon
5	10	PKF204	Flat Head Phillips Screw, M2 x 4, PEEK
4	4	PKMF1425	Flat head Phillips Screw, M1.4 x 2.5, PEEK
3	5	17913-0012-0	Cable Clamp 1
2	1	17913-0011-0	Probe Clamp
1	1	17913-0010-0	Probe Holder

DRAWN M. Duffy CHECKED J. Tognetti ENGINEERING	DATE 22 May, 2019 DATE DATE	DO NOT SCALE FROM DRAWING DIMENSIONS & TOLERANCES UNLESS OTHERWISE NOTED <table border="1"> <tr> <th>LINEAR</th> <th>INCHES</th> <th>mm</th> </tr> <tr> <td>X.XXX</td> <td>±0.005</td> <td>±0.03</td> </tr> <tr> <td>X.XX</td> <td>±0.01</td> <td>±0.1</td> </tr> <tr> <td>X.X</td> <td>±0.03</td> <td>±0.3</td> </tr> <tr> <td>X</td> <td>±0.06</td> <td>±1</td> </tr> <tr> <td>DEG.</td> <td>±0.5</td> <td>±0.5</td> </tr> <tr> <td>FINISH</td> <td>63</td> <td>1.6</td> </tr> </table>	LINEAR	INCHES	mm	X.XXX	±0.005	±0.03	X.XX	±0.01	±0.1	X.X	±0.03	±0.3	X	±0.06	±1	DEG.	±0.5	±0.5	FINISH	63	1.6	GMW Associates 955 Industrial Road, San Carlos, CA 94070 Tel: (650) 802-8292. Fax: (650) 802-8298 TITLE: SENIS 3MTS-2 Probe Holder General Assembly
LINEAR	INCHES	mm																						
X.XXX	±0.005	±0.03																						
X.XX	±0.01	±0.1																						
X.X	±0.03	±0.3																						
X	±0.06	±1																						
DEG.	±0.5	±0.5																						
FINISH	63	1.6																						
SIZE A2		DWG NO. 11913-0005-0	REV. A																					
SCALE: 1:1		MASS: .60 kg	SHEET: 1 OF 1																					